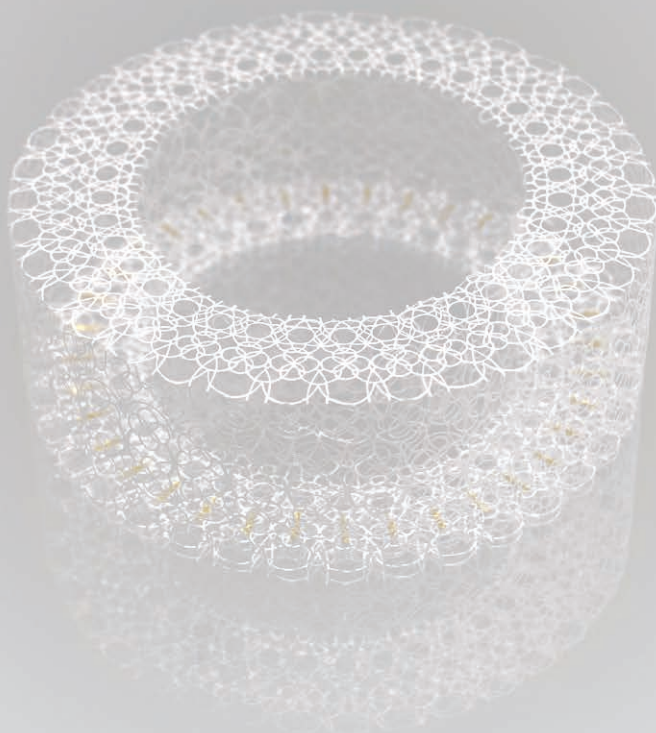




ASHLEY YEO  
and JODI TAN



E-Published specially for

**Bloom** | A Duo Exhibition by Ashley Yeo and Jodi Tan

Organised by iPRECATION

E-published, designed and edited by

iPRECATION 誰先覺  
ipreciation.com

T: (65) 6339 0678

F: (65) 6438 2080

50 Cuscaden Road

HPL House #01-01

Singapore 249724

[www.ipreciation.com](http://www.ipreciation.com)

[enquiry@ipreciation.com](mailto:enquiry@ipreciation.com)

[www.facebook.com/ipreciation](https://www.facebook.com/ipreciation)

[www.instagram.com/ipreciation](https://www.instagram.com/ipreciation)

<https://www.youtube.com/ipreciation>

WeChat ID: iPreciation

<https://www.artsy.net/ipreciation>

Copyright © 2019 iPRECATION

All rights reserved. No part of this e-publication may be reproduced, stored in a retrieval, or transmitted in any form or by any means, electronic, photocopying or otherwise, without prior permission of the copyright holders

Supported by:



Front Cover Image: **Ashley Yeo** - Marigold No.2, 2019, 15x15x5cm, Hand Cut Paper and Gold Leaf

Back Cover Image: **Jodi Tan** - Still Life #138, 2019, 102x76.5cm, Acrylic on Canvas

## Contents

05	Foreword by Helina Chan
07	Ashley Yeo
41	Jodi Tan
69	Ashley and Jodi Collaborative Works

Both graduated in 2011 from LASALLE College of the Arts, artists Ashley and Jodi share similar artistic visions and actively participate in Singapore's art community. Albeit different in practice, both were invited to articulate their thoughts through "Bloom", an exhibition to explore alternate perspectives on how a floral subject can be conceived and be reinterpreted in contemporary art.

Ashley practices both drawing and paper cut art with theme on nature. She takes references from botanical symmetry to create delicate paper cut work. The intricacy of these works can be related to the fragility and impermanence of a flower. The natural perseverance and vigour of a flower to multiply and survive can also be seen within these paper cut works where floral patterns flow seamlessly from edge to edge. It is in the accumulation of detail in her artworks, where the viewers can see strength and an underlying intensity of a message being silently conveyed.

Jodi questions the significance of a subject matter and one's perception of it. To her, paintings of flowers have been typecast as decorative or dated, and various symbolisms have been embodied by the use of florals in both classical and ornamental paintings. Her paintings blur the line between figurative and abstraction by disassociation from, or reduction of, the known symbolisms.

I am delighted to share the latest works created by both Ashley and Jodi at iPRECIATION. I wish them the very best and look forward to seeing their artistic career flourish.

## Ashley Yeo

*(b. 1990, Singapore)*

Ashley Yeo has graduated with a Master's Degree in Fine Art from the University of Arts London, Chelsea College of the Art & Design, United Kingdom in 2012. She was the first Singaporean artist to be shortlisted for the LOEWE Craft Prize, London, United Kingdom (2018). Ashley had founded her practice through drawing, and has developed her practice to creating artworks of exceptionally light, delicate crafts with meticulous details. Ashley is often inspired by nature, and by taking in the nature of a plant such as flowers; the impermanence, frailty, and delicateness. In her latest practice of papercut art, she demonstrates a slow and light construction that attempts to present an elegant and emotional resonance through the use of material and repeated patterns. The repetition in her creative process reflects and meditates on the contemporary society of the world that has contributed to an array of anxieties and emptiness. Ashley is interested in presenting new objects in silence that attempts to articulate equanimity, generating a discourse of the obfuscation of things and the epidemics of visual culture.

## Lily

2019  
6x6x6cm  
Hand Cut Paper and Gold Leaf



## Marigold No. 2

2019  
15x15x5cm  
Hand Cut Paper and Gold Leaf



## Camellia

2019  
10.5x10.5x4cm  
Hand Cut Paper



## **Moonflower**

2019  
4x6.2x5cm  
Hand Cut Paper





## Study of Petals

2019

9.5x3.5x3.5cm(Petals No.1)

0.5x3x3cm(Petals No.2)

Hand Cut Paper



## Study of Diamond

2018  
4.5x4.5x7cm  
Hand Cut Paper



## Chrysanthemum

2019  
15x14cm  
Ink on Paper



**Still Life No. 2**

2019  
25x23cm  
Ink on Paper



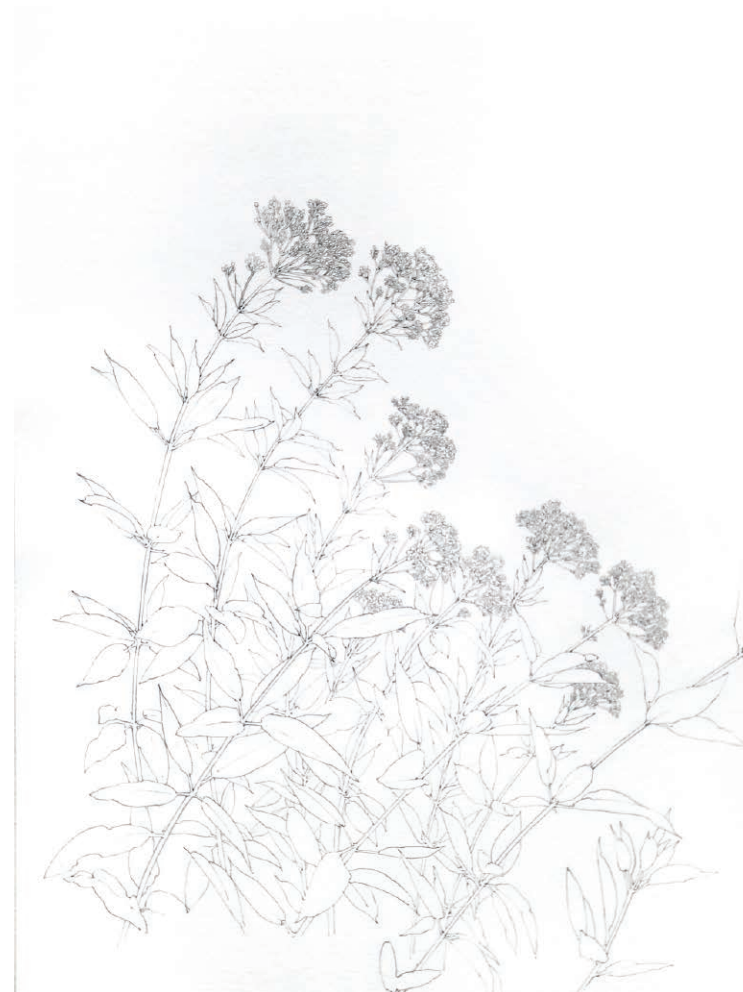
**Still Life No. 3**

2019  
40x26cm  
Ink on Paper



## Japanese Sweet Meadow

2019  
40x30cm  
Ink on Paper



### Skies No.9

2018  
10x18cm  
Pigments on Korean Paper

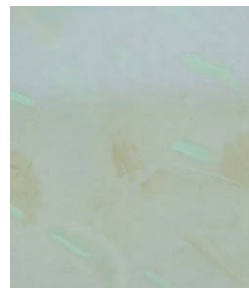


### Skies No.16

2018  
14.5x12cm  
Pigments on Korean Paper

### Skies No.8

2018  
35x26.5cm  
Pigments on Korean Paper

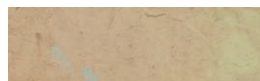


### Skies No.15

2018  
21.5x18.5cm  
Pigments on Korean Paper

### Skies No.5

2019  
3.5x11.5cm  
Pigments on Korean Paper



### **Skies No.7**

2018  
31.5x17.5cm  
Pigments on Korean Paper

### **Form No.7**

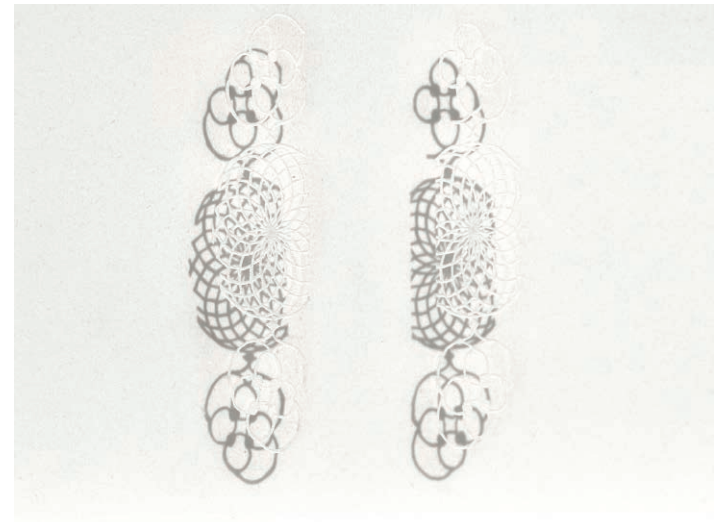
2019  
4x6.5cm  
Alcohol Based Pigments and Hand Cut Paper





**Cereus No.3**

2019  
6x1.5cm (Each)  
Hand Cut Paper



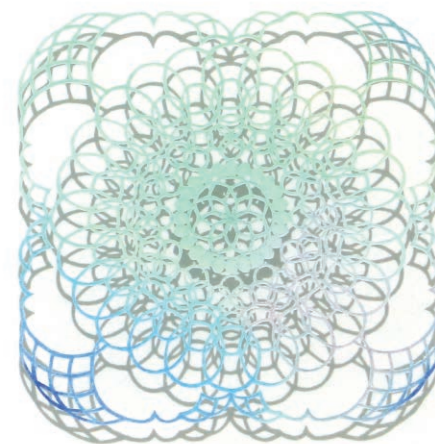
**Cereus No.1 and No.2**

2019  
12x7cm (Each)  
Hand Cut Paper



## **Camellia No.2**

2019  
6.5x6.5cm  
Alcohol Based Pigments and Hand Cut Paper



**Still Life No.4**

2019  
6.5x4.5cm  
Hand Cut Paper and Gold leaf



**Still Life No.5**

2019  
7.5x9cm  
Hand Cut Paper and Gold Leaf



## Jodi Tan

*(b. 1990, Singapore)*

Jodi Tan has graduated with a B.A. (Honours) in Fine Arts from LASALLE College of the Arts, Singapore in 2011. She was also awarded the Winston Oh Travel Award, Singapore, in the same year. Jodi's core interest lies in image-making and image reading. As she continues her ongoing series of "Still Life", her works are often created with found images, which she would derive particular colours or textures that spoke to her, then reconstructs the image in ambiguity, blurring the line between figuration and abstraction. In her works, Jodi explores the creation of an image where interference from symbolisms and associated meanings are reduced, or even becomes irrelevant. With a hint of familiarity, the artworks are presented to its viewer with a doubt or a choice; what does one choose to see, and how does one read the image?

**Still Life #113**

2018  
46x35.5cm  
Acrylic on Canvas





**Still Life #121**

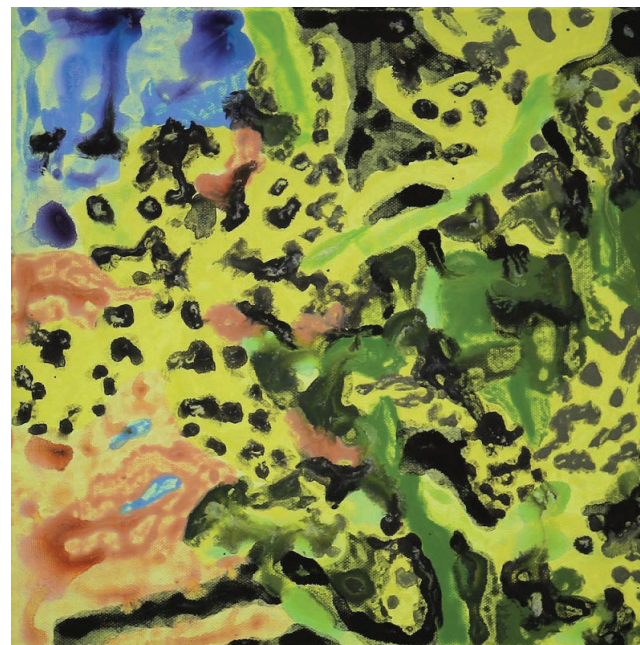
2018  
102x76.5cm  
Acrylic on Canvas





**Still Life #134**

2019  
30.5x30.5cm  
Acrylic on Canvas



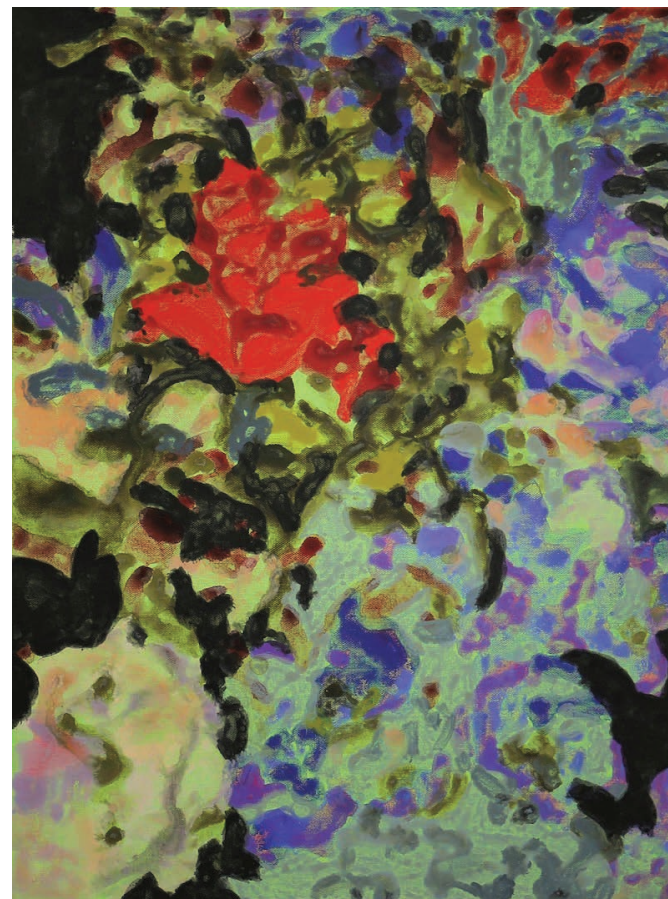
**Still Life #152**

2019  
45.5x45.5cm  
Acrylic on Canvas



**Still Life #153**

2019  
61x46cm  
Acrylic on Canvas



**Still Life #133**

2019  
76x60.5cm  
Acrylic on Canvas





**Still Life #135**

2019  
76x60.5cm  
Acrylic on Canvas



**Still Life #141**

2019  
76x56.5cm  
Acrylic on Paper



**Still Life #151**

2019  
76x56.5cm  
Acrylic on Paper





**Still Life #138**

2019  
102x76.5cm  
Acrylic on Canvas





**Still Life #122**

2019  
120x40cm  
Acrylic on Canvas



**Still Life #154**

2019  
122x91.5cm  
Acrylic on Canvas



**Ashley and Jodi  
Collaborative Works**

### **Skies No. 4**

2018  
13.5x7cm  
Pigments on Korean Paper

### **Still Life #124**

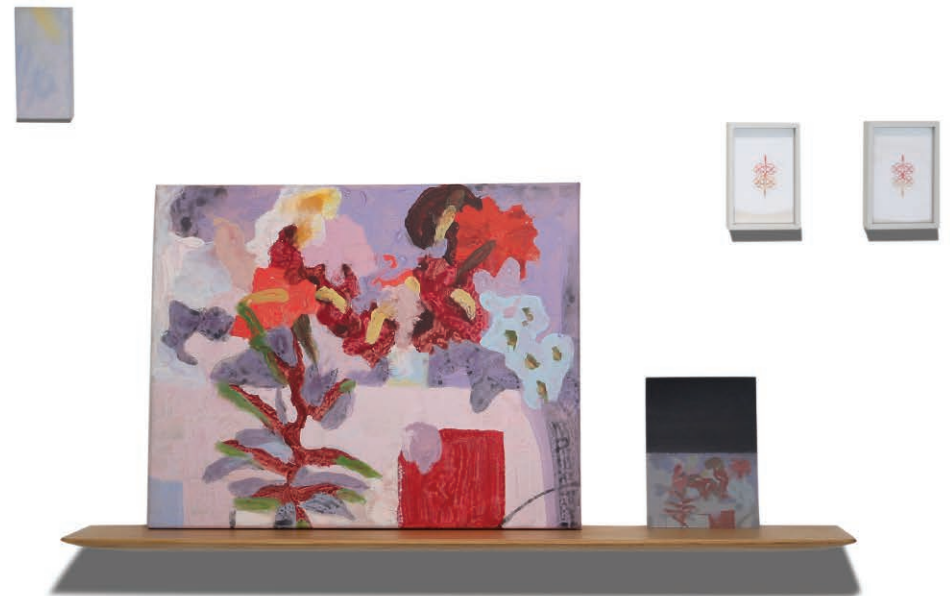
2018  
40.5x50.5cm  
Acrylic on Canvas

### **Still Life #124**

2019  
17.8x13cm  
Acrylic and Alcohol Based Pigments on Paper

### **Still Life #124**

2019  
5x3cm (Each)  
Alcohol Based Pigments and Hand Cut Paper



**Still Life #109**

2018  
30.5x30.5cm  
Acrylic on Canvas

**Still Life #109**

2019  
4x5.5cm  
Alcohol Based Pigments and Hand Cut Paper



**Still Life #119**

2018  
30.5x30.5cm  
Acrylic on Canvas

**Still Life #119**

2019  
4x8.5cm  
Alcohol Based Pigments and Hand Cut Paper

**Still Life #119**

2019  
7x4cm  
Alcohol Based Pigments and Hand Cut Paper



**Still Life #120**

2018  
30.5x30.5cm  
Acrylic on Canvas



**Still Life #120**

2019  
6x3.5cm  
Alcohol Based Pigments and Hand Cut Paper





**Still Life #123**

2018  
30.5x30.5cm  
Acrylic on Canvas

**Still Life #123**

2019  
9x5.5cm  
Alcohol Based Pigments and Hand Cut Paper





### Still Life #117

2018  
61x46cm  
Acrylic on Canvas

### Still Life #117

2019  
2.4x2.4x2.4cm (Each)  
Alcohol Based Pigments and Hand Cut Paper  
(Set of 4)



**Still Life #155**

2019  
122x91.5cm  
Acrylic on Canvas

**Still Life #155**

2019  
3.6x3.x3.6cm  
Alcohol Based Pigments and Hand Cut Paper  
(Set of 3)



## Ashley Yeo

**1990** | Born in Singapore

### Education

**2011** | Ba(Hons) in Fine Art, First Class Honours, LASALLE College of the Arts, Singapore **2012** | Masters in Fine Art, Merit, University of Arts London, Chelsea College of Art & Design, United Kingdom

### Selected Solo Exhibitions

**2016** | The Haze in their eyes, Becky Art Space, Jeonju, South Korea **2015** | You must imagine Sisyphus happy, FOST Gallery, Singapore **2012** | The Lost Children, Gallery du Monde, London / Room, Foxriver Gallery, Singapore **2011** | A Thousand Words and more, Kartestudios, Singapore / Silent Infatuations, Trispace, Singapore

### Selected Group Exhibitions

**2019** | Bloom, iPreciation Gallery, Singapore / ON/OUT OF PAPER, Mizuma Gallery, Singapore / LOEWE Craft Prize 2018 Finalists from the East, ESH Gallery, Milan, Italy **2018** | Loewe Craft Prize, London Design Museum, London, UK **2017** | Finding Tenderness, Waterlon Galerie, Chicago, USA / Skin, Becky Art Space, Jeonju, South Korea / Mokuhanga Lab, CfsHE Gallery, Tokyo, Japan **2016** | Imaginarium: An Odyssey, Singapore Art Museum, Singapore / In their Oceans, Esplanade, Singapore **2015** | The Measure of your Dwelling: Singapore as Unhomed, Ifa Gallery, Berlin, Germany / Economy, LATENT SPACES, Art Stage Singapore **2014** | Art on Paper Biennial, Weatherspoon Museum, North Carolina USA / Smallness, FASS Gallery Sabanci, University, Istanbul Turkey / (Machines) Contemplating the bodies, Singapore General Hospital, Singapore **2013** | Found, Museum of Contemporary Art (MoCA@Loewen), Singapore / Dialogue, the promise, CMU Art Center, Chiang Mai, Thailand / Night as Mine, Institute of Contemporary Art Singapore, Singapore / Looking for Time, The Private Museum, Singapore / Future Map, Lethaby Gallery, London, UK **2012** | The Affordable Art Fair, London UK / project:showcase {ART}, Push!, London, UK / Without boats, dreams dry up, Cape Farewell @ Triangle, Space Chelsea College, Long, UK **2010** | France + Singapore New Generation Artists, Alliance Francaise, Singapore

### Awards and Grants

**2017** | Marketing and Development Grant, National Arts Council Singapore **2016** | Capability Development Grant, National Arts Council Singapore / Presentation and Participant Grant, National Arts Council Singapore **2015** | Capability Development Grant, National Arts Council Singapore **2014** | Capability Development Grant, National Arts Council Singapore **2013** | Capability Development Grant, National Arts Council Singapore / Presentation and Participant Grant, National Arts Council Singapore **2011** | Recipient of LASALLE College of the Arts, Academic Excellence Award **2010** | National Arts Council Scholarship / WINSTON OH Travel Award Travelogue Practice

## Jodi Tan

**1990** | Born in Singapore

### Education

**2010** | Diploma in Fine Art, LASALLE College of the Arts, Singapore **2011** | Ba(Hons) in Fine Art, First Class Honours, LASALLE College of the Arts, Singapore

### Selected Solo Exhibitions

**2019** | Session #7, Peninsular, Singapore **2018** | Room, SPRMRKT, Singapore

### Selected Group Exhibitions

**2019** | Bloom, iPreciation Gallery, Singapore / Fearless Females, WeWork, Suntec Tower 5, Singapore **2018** | Fantasy Islands, I\_S\_L\_A\_N\_D\_S, Singapore / Departure 3, iPreciation, Singapore / say hi to\_house, DDD Holland Village, Singapore / River Stories at The Mountbatten, Padang Trust, Singapore / Re: Generation – Young Singapore Artists Series, The Fullerton Hotel Singapore, Singapore **2016** | Young Talent Programme 2016/17, Affordable Art Fair, Singapore / UNTAPPED EMERGING, SHOPHOUSE 5, Singapore **2014** | Seni Mini, Mi Casa Su Casa, Singapore **2013** | Criss\*Cross, The Arts House, Singapore / Buku Mini, Mi Casa Su Casa, Singapore / Mi Casa Su Casa, Mi Casa Su Casa, Singapore / Looking For Time, The Private Museum, Singapore **2012** | Looking For Space, 71 Sultan Gate, Singapore **2011** | The Winston Oh Travel Award 2011, Project Space, Institute of Contemporary Arts, Singapore / Human Activities, Karte Studio, Singapore **2010** | A Persistent Illusion, Forest Rain Gallery, Singapore / Accent on Art, Accenture, Singapore / Pameran Poskad, My Art Space, Singapore / I AM WHAT I AM, Sculpture Square, Singapore **2009** | Tape It Up, Tape It Down!, Praxis Space, Institute of Contemporary Arts, Singapore / Singapore Artstreet 2009, Parkway Parade, Singapore **2008** | Man-made this, LASALLE College of the Arts, Singapore

### Awards and Grants

**2011** | The Winston Oh Travel Research Award, Singapore **2006** | Singapore Youth Festival Gold Award, Ministry of Education, Singapore

### Curatorial Projects

**2013** | Looking For Time (by The Collective), The Private Museum, Singapore **2012** | Looking For Space (by The Collective), 71 Sultan Gate, Singapore



An abstract painting featuring a dense composition of bold, expressive brushstrokes. The color palette is dominated by bright reds, oranges, and yellows, interspersed with deep blues, blacks, and greens. The background is a soft, pale pink. The overall effect is one of dynamic energy and emotional intensity.

iPRECIATION 誰先覺  
ipreciation.com

